

I've Got My First Student With T1D- NOW WHAT?!

FIRST THINGS FIRST...

- Feel like you need some brushing up on your type 1 diabetes management skills?
 - Know your resources within the school nurse community and speak up to ask for training/help if you feel like you need it.
 - Reach out to Children's Healthcare of Atlanta for additional resources.

CAMP KUDZU CAN HELP!

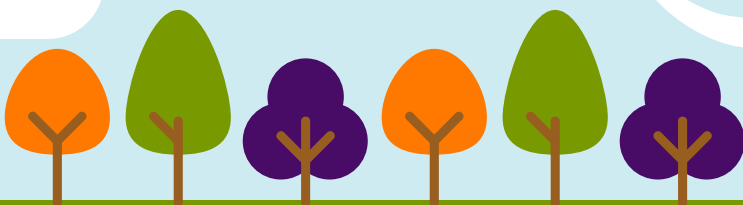
- Send a Kudzu Connect Card home with the child and a Camp Kudzu Flyer. Families can scan the QR code to get on our communication list!
- If the family regularly communicates via email, send them the link to our web page at www.campkudzu.org and visit our Newly Diagnosed Family Page.

CAMP KUDZU NURSE PAGE

- Visit www.campkudzu.org/schoolnurse for additional resources including
 - Handouts for school staff and teachers, parents, and students
 - Year-round calendar with Kudzu events
 - Continuing education opportunities

COME TO CAMP!

Students frequently say that one of their favorite things about camp is the familiar faces they see--their endocrinologist, CDE, or school nurse!



QUESTIONS? REACH OUT TO ANNA ALBRITTON AT
AALBRITTON@CAMPKUDZU.ORG OR 404-495-4857
404-495-4856.